

PHOTON SOLAR Energy GmbH
Niermansweg 11-15, 40699 Erkrath, Germany
Tel: +49-211-280125-0 Fax: +49-211-280125-29
Email: info@photon-solar.de web: www.photon-solar.de

Photon Solar®
Energy - Germany



Integrated Solar Lights (2017 – generation)

Autonomous solar lamps for streets, gardens, parks, parking areas, building walls etc.

Integrated solar street light, also named as All-in-one solar street light, is an integration of solar panel, LED light, lithium battery, controller, charger, constant current driver in a casing with fixing parts.

We hereby proudly present our intelligent autonomous solar light which combines the technology of photoelectric effect, constant current controlling, infrared motion sensing, smart phone App controlling and multiple practical controlling.

Gen2017 - latest state-of-the art technology – it is a second revolution on higher level solar lighting system.



PHOTON SOLAR Energy GmbH

Niermansweg 11-15, 40699 Erkrath, Germany
Tel: +49-211-280125-0 Fax: +49-211-280125-29
Email: info@photon-solar.de web: www.photon-solar.de

Main Features

1. Enable to reset for different seasons according to local climate and weather condition. Adjust brightness to extend battery life.
2. Loading controller operation data and display on APP page, including controller works normally or abnormally, charging or discharging, current battery capacity, voltage, solar panel voltage, etc..
3. Infrared motion sensor, automatic light dim or illuminate, realize save energy consumption
4. Brightness changing gently and smoothly thanks to advanced controlling technology.
5. In succession several rainy days, the system will automatically switch to energy saving mode when battery is low.
6. Power supply interface for camera with built-in memory card
7. Famous brand solar panel with high efficiency (higher than 98%) is applied.
8. Multiple software /hardware protection ensures safety and reliability
9. Self-diagnosis and recovery function is equipped, ensures automatic operation in all-weather condition
10. Water proofed lamp body allow applying in heavily rainy and dusty condition.

Premium quality components

American Bridgelux LED source, provide excellent luminous efficiency up to 120LM/W and keep permanent stability as well as comfortable visual experience.

Each Bridgelux LED has anti-static protection elements to avoid harm from static electricity maximally.

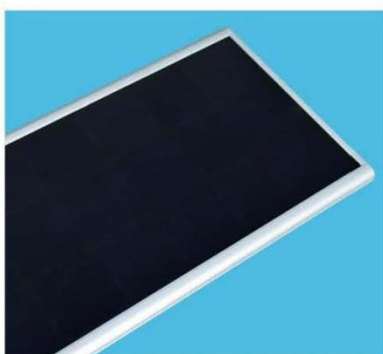
Premium quality high efficiency mono crystalline solar cells allow this light collect as much energy as possible to provide long time power support.

Premium quality deep cycle lithium battery allows this light to be much lighter and smaller without sacrificing the capacity of power storage. Long serve span, stable performance provides excellent Rate of Return.

Infrared body sensor allows the light to work on energy saving mode to save energy when no people are detected. When people come near to the light and are detected by infrared sensor, the system is going to work on full power to bring enough light.



BRIDGELUX



Solar panel



Lithium Battery



Controller

PHOTON SOLAR Energy GmbH

Niermansweg 11-15, 40699 Erkrath, Germany
Tel: +49-211-280125-0 Fax: +49-211-280125-29
Email: info@photon-solar.de web: www.photon-solar.de

Mobile phone control-----FOR 18W SIZE AND ABOVE ONLY

Our street light has been equipped with cellphone control function through App (contact us to download free), major operation data access, system control is so easy.

Step1
*Download & Install this APP
*Open the Bluetooth via mobile phone

Step2
*The main interface is available

Step3
*Search the code of integrated Solar led street light also pairing

Step4
*Choose the item No. to pairing
Ps:
Item No.: IN-270

Step5
*Enable to reset needed season (spring/summer/autumn/winter), so as to adjust corresponding lamp brightness
Ps:
Season: Spring

Step6
*Enable to reset needed rainy/cloudy days (3/5/10 days), so as to adjust corresponding lamp brightness
Ps:
Rainy/Cloudy Days: 3Days

Step7
*Enable to reset needed dawn operating data. Such as open or close dawn lighting, set the dawn/dusk lighting duration.
*Enable to reset needed lamp lighting on postpone time.
*Other settings

PHOTON SOLAR Energy GmbH

Niermansweg 11-15, 40699 Erkrath, Germany
Tel: +49-211-280125-0 Fax: +49-211-280125-29
Email: info@photon-solar.de web: www.photon-solar.de

Solar lamp - Standard Version - C Series

Major Parameters

PS-C series model no	PS-C-6	PS-C-8	PS-C-12	PS-C-15	PS-C-18	PS-C-20	PS-C-25	PS-C-30
LED Power (Watt)	6	8	12	15	18	20	25	30
Solar Power (Wp)	10	15	18	20	30	50	50	65
Battery (AH)	4	6	7	10	13	17	18	26
Min Luminous Flux (lm)	600	900	1200	1500	1600	2100	2500	3000
Max Luminous Flux (lm)	650	950	1280	1580	1700	2200	2700	3300
Charging Time (Hour)	7	7	7	7	8	8	8	8
Rainy Days (Day)	3~4	3~4	3~4	3~4	3	3	5	5
Installation Height (m)	2~2.5	2~2.5	2~2.5	3~4	4~5	5~5.5	5~5.5	6~7.5
Control	Infrared/Light/Time control. APP Control for 18W and above							

***LED Chip Bridgelumx 45ML (PS-C-6 Epistar 3528), High efficient premium mono crystalline solar panel**

Dimensions

PS-C series model no.	PS-C-6	PS-C-8	PS-C-12	PS-C-15	PS-C-18	PS-C-20	PS-C-25	PS-C-30
Product Length (mm)	380	350	350	480	650	960	960	1210
Product Width (mm)	220	310	310	360	325	340	340	340
Product Thickness (mm)	50	45	45	50	35	45	45	45
Product Weight (kg)	3	3.5	3.5	6	15	14	14	17
Package Length (mm)	435	460	460	550	720	1060	1060	1320
Package Width (mm)	265	350	350	420	400	400	400	400
Package Thickness (mm)	110	150	150	150	220	200	200	200
Package Weight (kg)	4	5	5	7	9	15	15	18

Product Pictures

6W



8/12/15W



18/20/30W



PHOTON SOLAR Energy GmbH

Niermansweg 11-15, 40699 Erkrath, Germany
Tel: +49-211-280125-0 Fax: +49-211-280125-29
Email: info@photon-solar.de web: www.photon-solar.de

Major Parameters

PS-C series - model no.	PS-C-40	PS-C-50	PS-C-60	PS-C-70	PS-C-80
LED Power (Watt)	40	50	60	70	80
Solar Power (Wp)	65	70	85	90	100
Battery (AH)	26	36	44	50	60
Min Luminous Flux (lm)	4000	5500	6500	7500	8500
Max Luminous Flux (lm)	4300	6000	7000	8000	9000
Charging Time (Hour)	8	8	8	8	8
Rainy Days (Day)	5	3	5	5	5
Installation Height (m)	6~7.5	7~8	7~8	7~9	7~10

Control Light Control/Time Control. App Control for 18W and above

***LED Chip Bridgelumx 45ML, high efficient premium mono crystalline solar panel**

Dimension of Product and Package

PS-C series model no.	PS-C-40	PS-C-50	PS-C-60	PS-C-70	PS-C-80
Product Length (mm)	1210	1210	1210	1210	1210
Product Width (mm)	340	340	460	460	460
Product Thickness (mm)	45	45	45	45	45
Product Weight (kg)	17	17	19	19	19
Package Length (mm)	1320	1320	1320	1320	1320
Package Width (mm)	400	400	500	500	500
Package Thickness (mm)	200	200	200	200	200
Package Weight (kg)	18	18	24	24	24

Product Pictures

40/50W



60W



70/80W



PHOTON SOLAR Energy GmbH

Niermansweg 11-15, 40699 Erkrath, Germany
Tel: +49-211-280125-0 Fax: +49-211-280125-29
Email: info@photon-solar.de web: www.photon-solar.de

Solar lamp - enhanced version - E series

Major Parameters

PS-E series model no.	PS-E-8	PS-E-12	PS-E-15	PS-E-30	PS-E-40	PS-E-50	PS-E-60
LED Power (Watt)	8	12	15	30	40	50	60
Solar Power (Wp)	20	25	30	65	70	85	85
Battery (AH)	9	10	13	36	36	44	44
Min Luminous Flux (lm)	900	1200	1500	3000	4000	6000	6500
Max Luminous Flux (lm)	950	1280	1580	4000	4300	7000	7000
Charging Time (Hour)	7	7	7	8	8	8	8
Rainy Days (Day)	5~7	5~7	5~7	7	7	7	7
Installation Height (m)	2~3.5	3~4	4~5	6~7.5	6~7.6	8~10	8~10

Control

Infrared/Light/Time Control, App Control

LED Chip Bridgelumx 45ML, High efficient premium mono crystalline solar panel

Dimension

PS-E series model no.	PS-E-8	PS-E-12	PS-E-15	PS-E-30	PS-E-40	PS-E-50	PS-E-60
Product Length (mm)	480	480	600	1210	1210	1210	1210
Product Width (mm)	360	360	380	340	340	460	460
Product Thickness (mm)	50	50	50	45	45	45	45
Product Weight (kg)	6	6	6	17	17	21	21
Package Length (mm)	550	550	650	1320	1320	1320	1320
Package Width (mm)	400	400	400	400	400	500	500
Package Thickness (mm)	150	150	150	200	200	200	200
Package Weight (kg)	7	7	7	18	18	24	24

Product Pictures

8/12/15W



30/40W



50/60W



PHOTON SOLAR Energy GmbH

Niermansweg 11-15, 40699 Erkrath, Germany
Tel: +49-211-280125-0 Fax: +49-211-280125-29
Email: info@photon-solar.de web: www.photon-solar.de

Major Parameters

PS-E series model no.	PS-E-70	PS-E-80	PS-E-90	PS-E-100	PS-E-110	PS-E-120
LED Power (Watt)	70	80	90	100	110	120
Solar Power (Wp)	90	100	130	130	150	150
Battery (AH)	55	60	80	80	88	88
Min Luminous Flux (lm)	7500	8500	9000	10000	11000	12000
Max Luminous Flux (lm)	8000	9000	10000	11000	12000	13000
Charging Time (Hour)	8	8	7	7	7	7
Rainy Days (Day)	7	7	5	5	5	5
Installation Height (Meter)	9~12	9~12	9~11	9~11	9~12	9~12
Control	Infrared/Light/Time/App			Light/Time/App Control		

Dimension of Product and Package

PS-E series model no.	PS-E-70	PS-E-80	PS-E-90*	PS-E-100*	PS-E-110*	PS-E-120*
Product Length (mm)	1210	1210	1570	1570	1670	1670
Product Width (mm)	460	460	460	460	460	460
Product Thickness (mm)	45	45	45	45	45	45
Product Weight (kg)	21	21	25	25	24	26
Package Length (mm)	1320	1320	1650	1650	1750	1750
Package Width (mm)	500	500	530	530	530	530
Package Thickness (mm)	200	200	120	120	120	120
Package Weight (kg)	24	24	26	26	26	27

* Extra package of accessory attached for PS-E-90/-100/-110/-120: 400*220*320mm 7kgs

Product Pictures

90/100/110/120W



Install/Below 90W



Install/90W and Above



PHOTON SOLAR Energy GmbH

Niermansweg 11-15, 40699 Erkrath, Germany
Tel: +49-211-280125-0 Fax: +49-211-280125-29
Email: info@photon-solar.de web: www.photon-solar.de

Solar lamp - round version - Y series

Major Parameters

PS-Y series model no.	PS-Y-15	PS-Y-20	PS-Y-25	PS-Y-30
LED Power (Watt)	15	20	25	30
Solar Power (Wp)	35	35	50	50
Battery (AH)	8	10	13	15
Min Luminous Flux (lm)	1500	2000	2500	3000
Max Luminous Flux (lm)	1600	3100	2600	3300
Charging Time (Hour)	7	7	7	7
Rainy Days (Day)	3~4	3~4	3~4	3~4
Installation Height (Meter)	4~5	4~5	5~6	5~6
Control	Light/Time/App Control			

***Bridgelumx LED Chip, High efficient premium mono crystalline solar panel**

Dimensions

PS-Y series model no.	PS-Y-15	PS-Y-20	PS-Y-25	PS-Y-30
Product Length (mm)	635	635	735	735
Product Width (mm)	635	635	735	735
Product Thickness (mm)	45	45	45	45
Product Weight (kg)	14	14	16	16
Product Length (mm)	700	700	800	800
Product Width (mm)	700	700	800	800
Product Thickness (mm)	120	120	120	120
Product Weight (kg)	15	15	17	17

Product Pictures

Project View



Solar Side



LED Side



PHOTON SOLAR Energy GmbH

Niermansweg 11-15, 40699 Erkrath, Germany
Tel: +49-211-280125-0 Fax: +49-211-280125-29
Email: info@photon-solar.de web: www.photon-solar.de

Solar lamp - modular version - F Series

Major Parameters

PS-F series model no.	PS-F-15
LED Power (Watt)	15
Solar Power (Wp)	22
Battery (AH)	12
Min. Luminous Flux (lm)	1600
Max Luminous Flux (lm)	1700
Charging Time (Hour)	7
Rainy Days (Day)	5~7
Installation Height (Meter)	3~8
Control	Time Control/Light Control

***Epistar LED Chip/ High efficient premium mono crystalline solar panel**

Dimension and Weight

PS-F series model no.	PS-F-15
Product Length (mm)	600
Product Width (mm)	520
Product Thickness (mm)	40
Product Weight (kg)	7.2
Product Length (mm)	700
Product Width (mm)	700
Product Thickness (mm)	150
Product Weight (kg)	12

Product Pictures – modular version – F series

Single light module



Three light modules



Five light modules



Product details

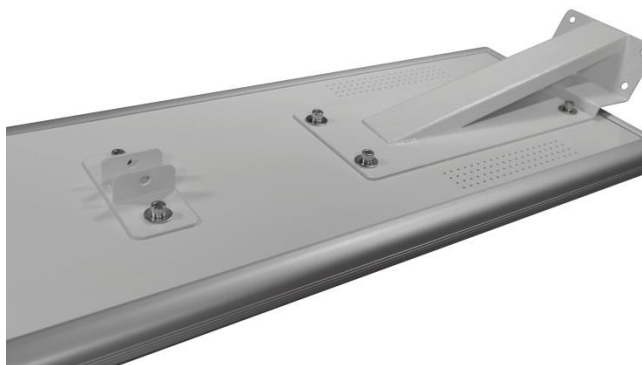
Components



Infrared-Sensor



LED power below 90W



Pole installation of LED Below 90W



LED 90W and above:



Pole installation of LED 90W and above:



Document status Apr 1, 2017